



CITY OF  
BAINBRIDGE ISLAND

TRAFFIC OPERATIONS COMMITTEE  
WEDNESDAY, OCTOBER 4, 2023  
3:00 – 4:00 PM  
ZOOM WEBINAR

---

---

PLEASE CLICK THE LINK BELOW TO JOIN THE WEBINAR:

[HTTPS://BAINBRIDGEWA.ZOOM.US/J/82310303740](https://bainbridgewa.zoom.us/j/82310303740)

TELEPHONE: 1-253-205-0468

WEBINAR ID: 823 1030 3740

#### AGENDA

1. STANDARD OPERATING PROCEDURE FOR WARNING SIGNS AND RELATED REQUESTS – 10 MIN.
2. REQUEST FOR WARNING SIGN: VISUALLY IMPAIRED MINOR NEAR 344 SHEPARD WAY NW – 10 MIN.
3. GROW MINI-ROUNDBOUT STATUS UPDATE – 5 MIN.
4. FOSTER ROAD CURVE: SAFETY IMPROVEMENT REVIEW – 10 MIN.
5. POINT MONROE SPEED LIMIT REQUEST – 5 MIN.

## **Standard Operating Procedure (SOP) for Warning Signs and Related Requests**

### **Purpose**

The purpose of this SOP is to address the Public Works Department's practice for responding to resident requests for warning signs or other traffic calming or safety-related facilities (speed humps, lighting, etc.) specifically associated with the protection of persons with disabilities. This SOP is limited to addressing persons with disabilities to reserve discretion for the Department's practices regarding the request for traffic facilities for other purposes.

### **Background**

Residents with children who have disabilities will sometimes request that warning signs or other traffic calming or safety-related facilities be installed in the public right-of-way near their homes. The Manual on Uniform Traffic Control Devices (MUTCD) provides guidance and criteria for the installation of traffic control devices, including warning signs, but does not establish criteria for the installation of warning signs specifically for the protection of children with disabilities. Therefore, the practices listed herein shall constitute the basis upon which requests for the installation of these safety-related facilities will be addressed.

It should be noted that the use of warning signs or other devices for the purposes of protecting persons with disabilities are not recognized by Washington State Department of Transportation or the Federal Highway Administration as official traffic control devices.

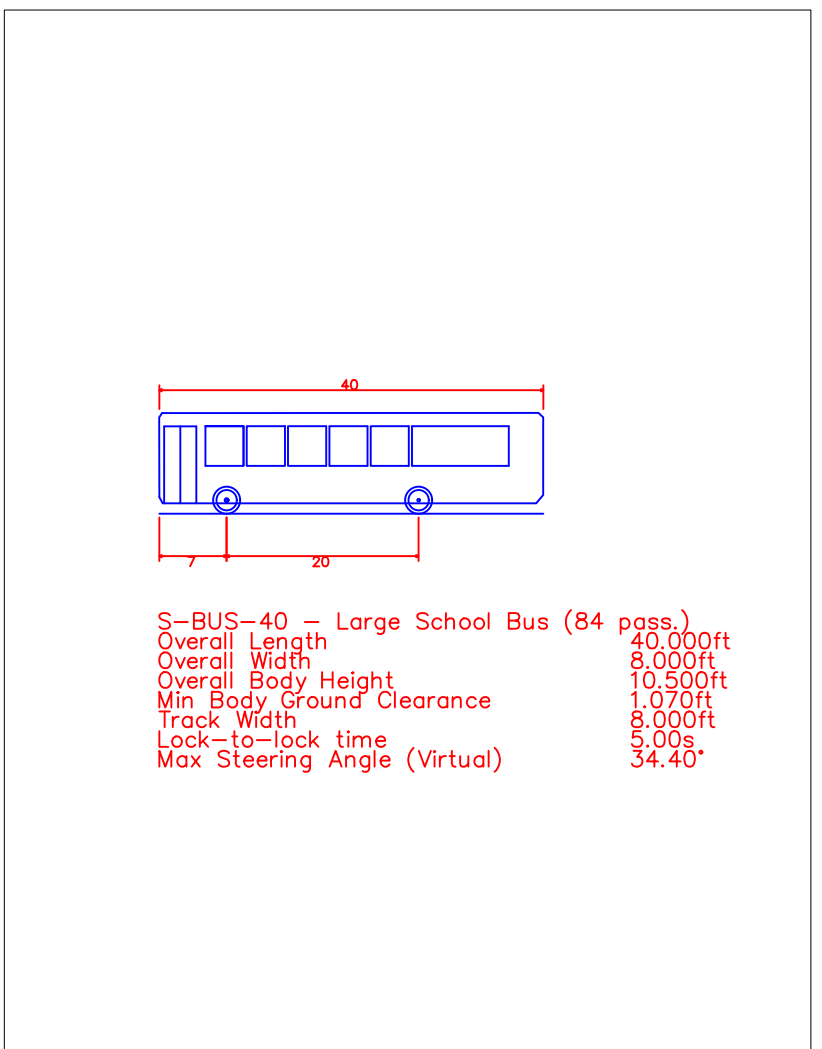
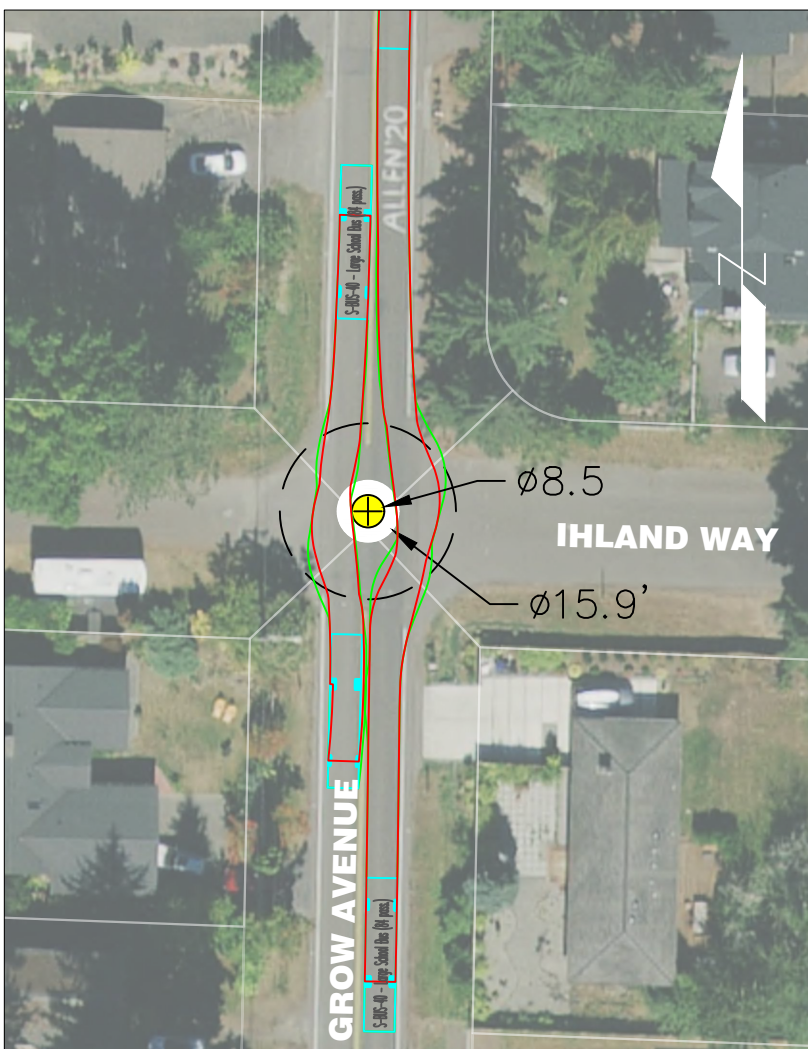
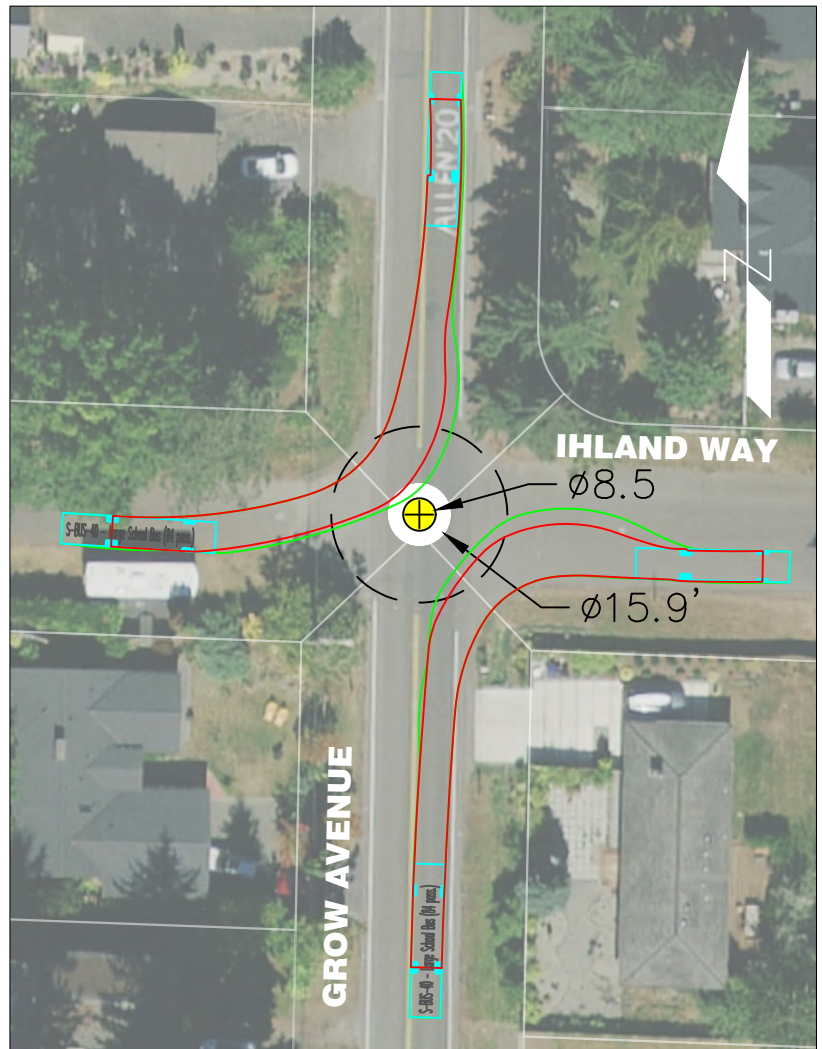
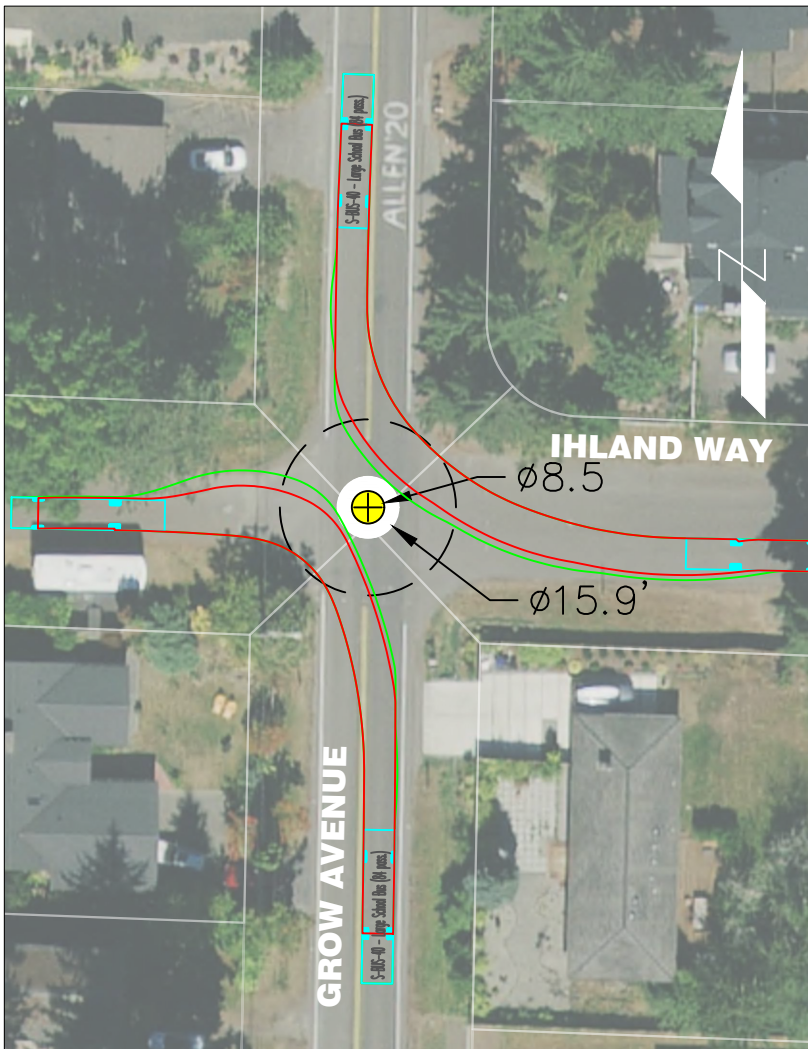
That stated, the Department is committed to addressing requests for resident safety, particularly persons with disabilities. Therefore, reasonable requests for signage or other traffic calming or safety-related facilities for these purposes will be considered.

### **Procedure**

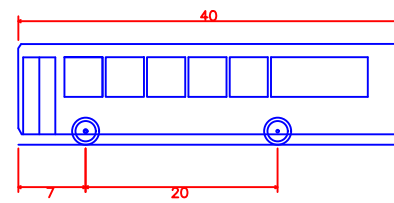
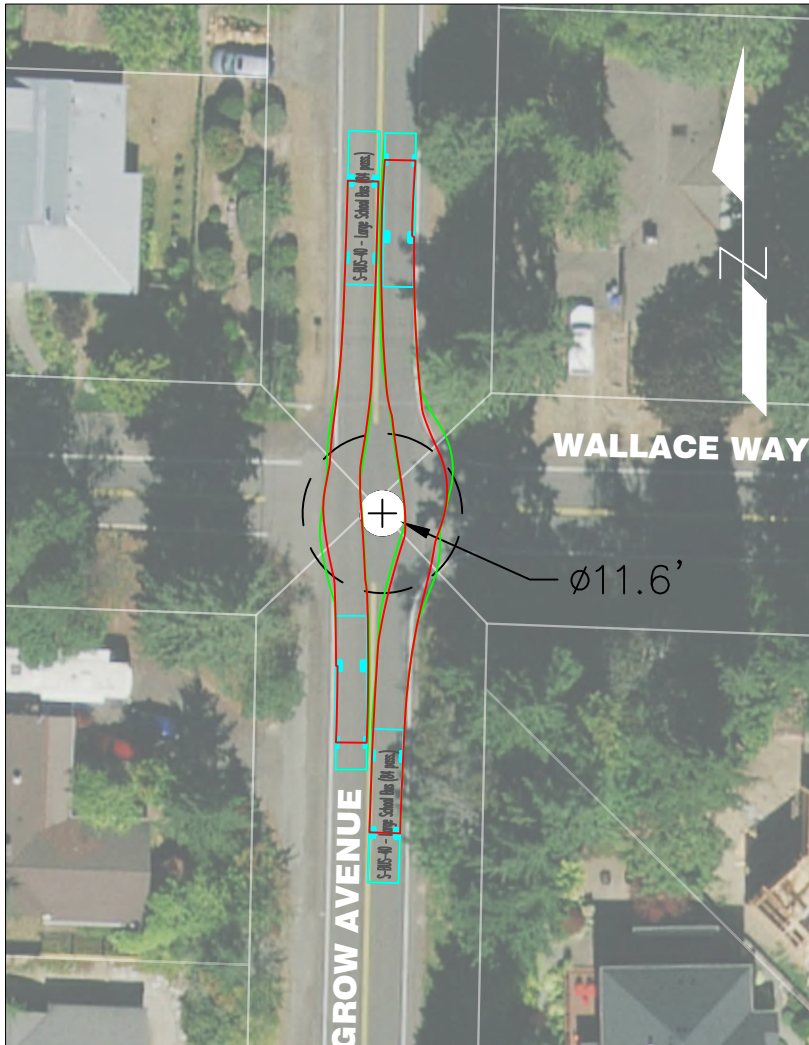
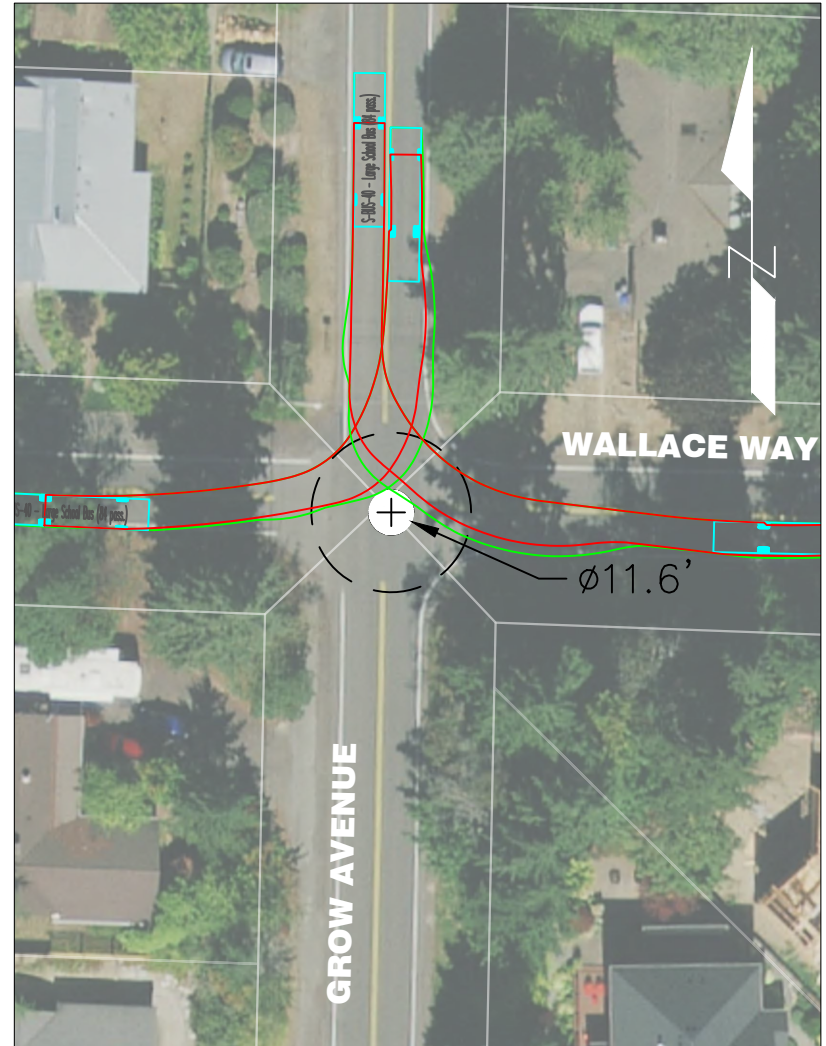
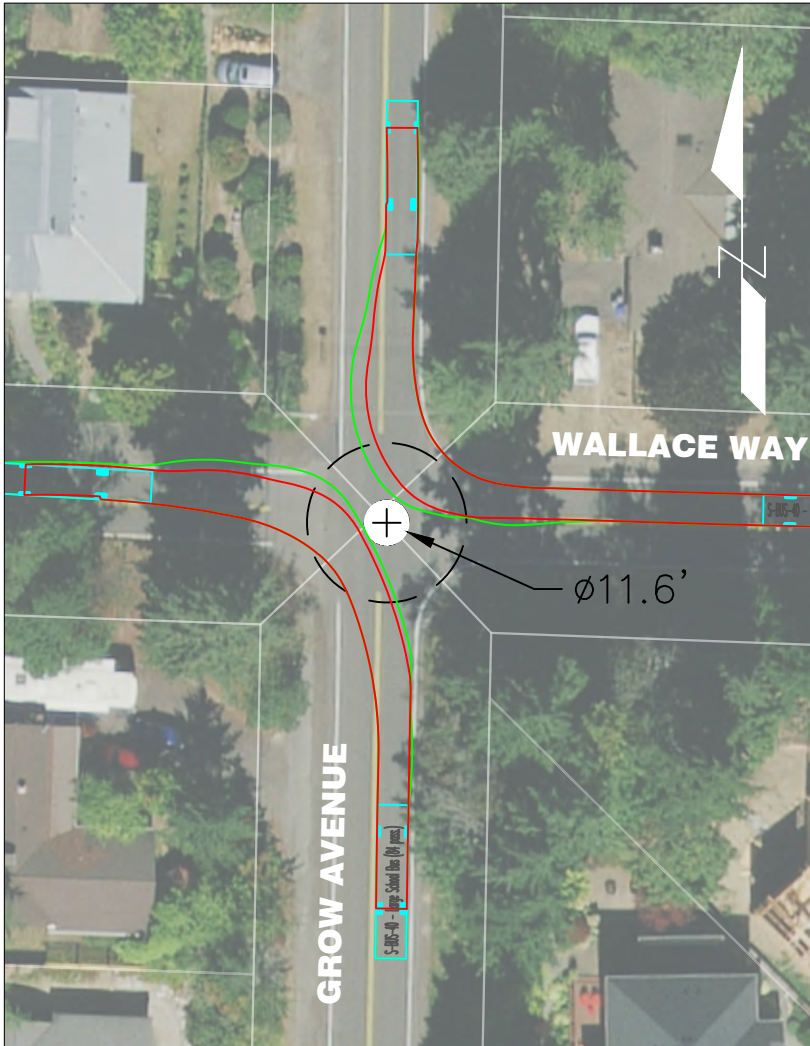
Written requests to the Department Director for signs or other facilities shall contain a statement regarding the subject person's disability and desired accommodation. All requests will be evaluated by the Department on the basis of safety, implementation challenges, cost, community concerns, and other applicable factors. If accepted by the Department, a recommendation for the facility type, location and timeline will then be prepared for review by the City's Traffic Operations Committee. In some cases, an incremental approach to the facility implementation may be recommended. Final authorization will be determined by the Committee. If approved, the facilities will be paid for by the City. Financial or other contributions from the requester will not be considered as a factor in the decision to implement.

The facilities will be reviewed every two (2) years to ensure that the criteria stated above still applies. The requestor of the facility shall be responsible for notifying the City Public Works Director if the subject person living at the address for which the facilities were placed is relocating.

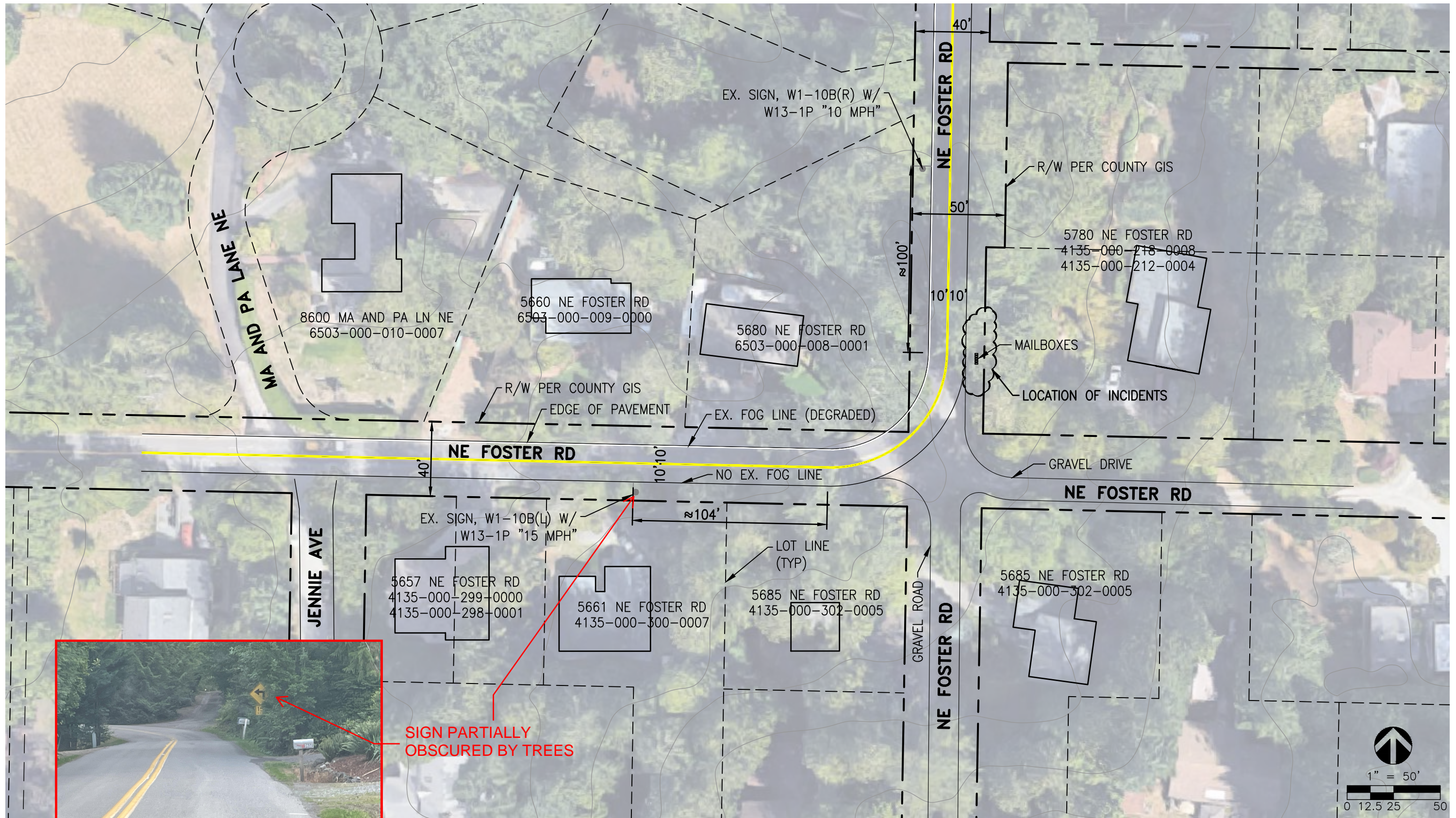
# GROW AVENUE MINI-ROUNDBABOUTS PRELIMINARY ASSESSMENT



# GROW AVENUE MINI-ROUNDBABOUTS PRELIMINARY ASSESSMENT



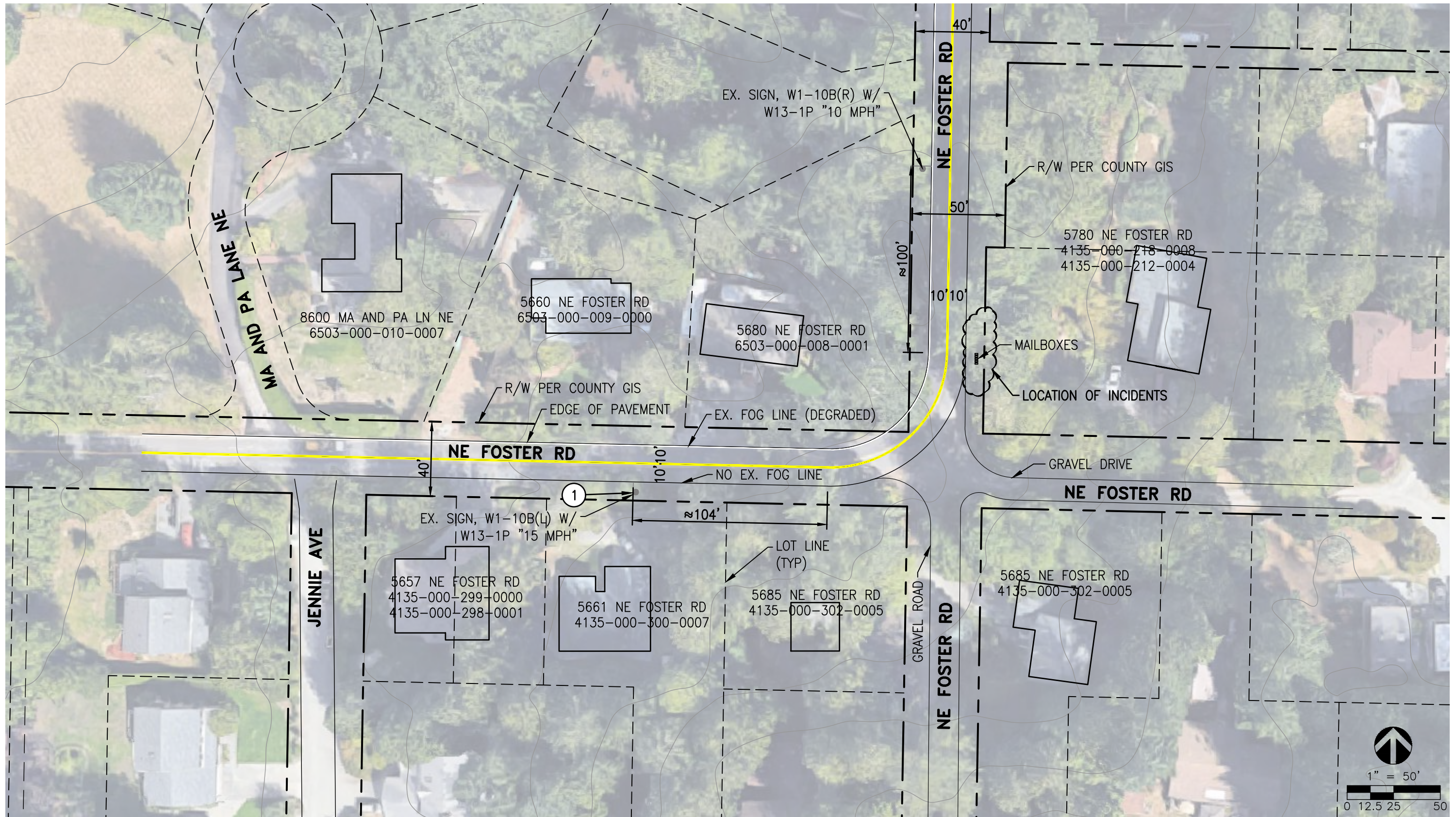
S-BUS-40 - Large School Bus (84 pass.)	
Overall Length	40.000ft
Overall Width	8.000ft
Overall Body Height	10.500ft
Min Body Ground Clearance	1.070ft
Track Width	8.000ft
Lock-to-lock time	5.00s
Max Steering Angle (Virtual)	34.40°



SIGN PARTIALLY  
OBSCURED BY TREES

**EB - NE FOSTER RD TRAFFIC SAFETY**  
**EXISTING CONDITIONS**





**RECOMMENDED IMPROVEMENTS**

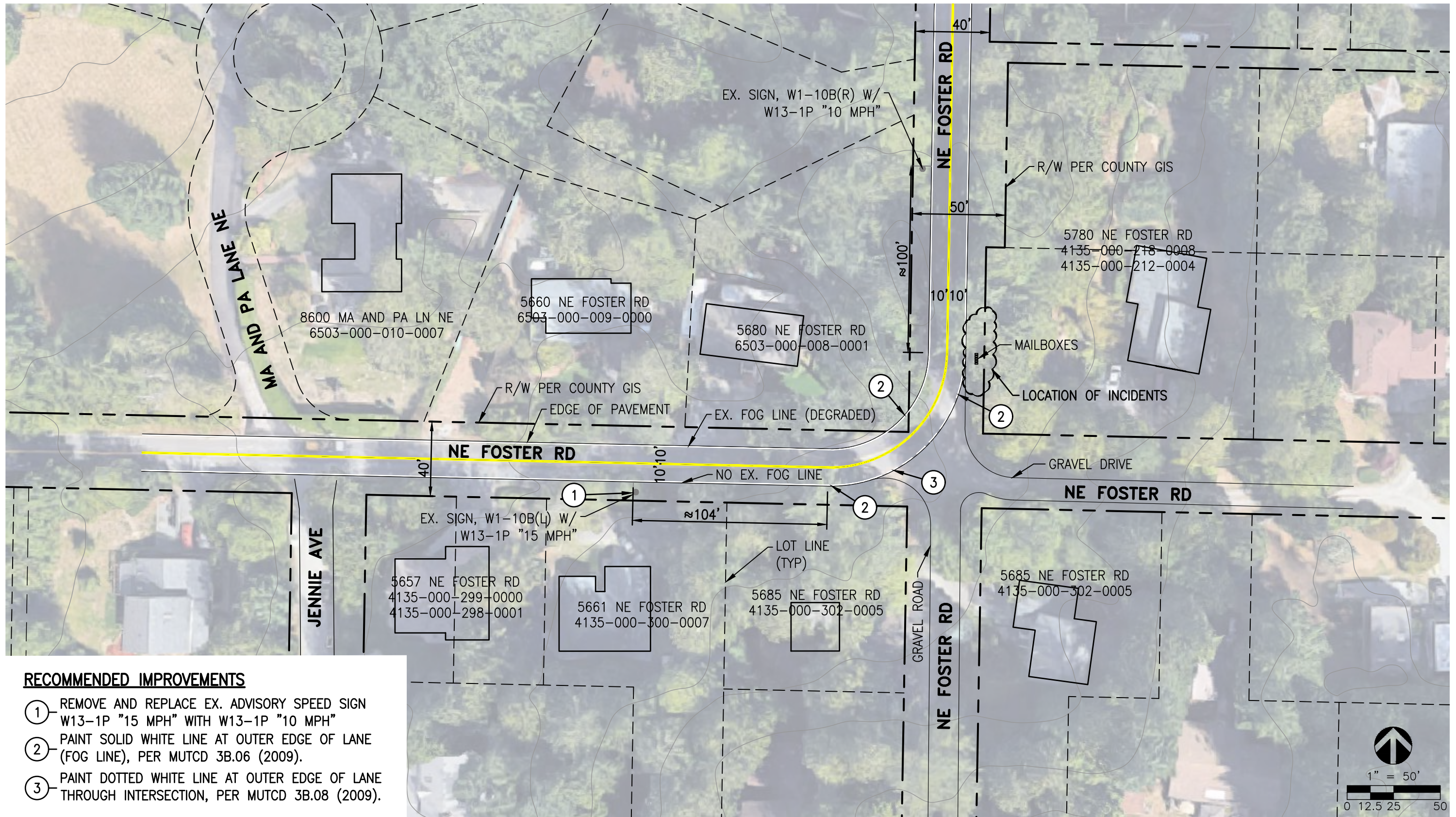
- ① REMOVE AND REPLACE EX. ADVISORY SPEED SIGN W13-1P "15 MPH" WITH W13-1P "10 MPH"



W13-1P  
"10 MPH"

**EB - NE FOSTER RD TRAFFIC SAFETY  
ALTERNATIVE 1**

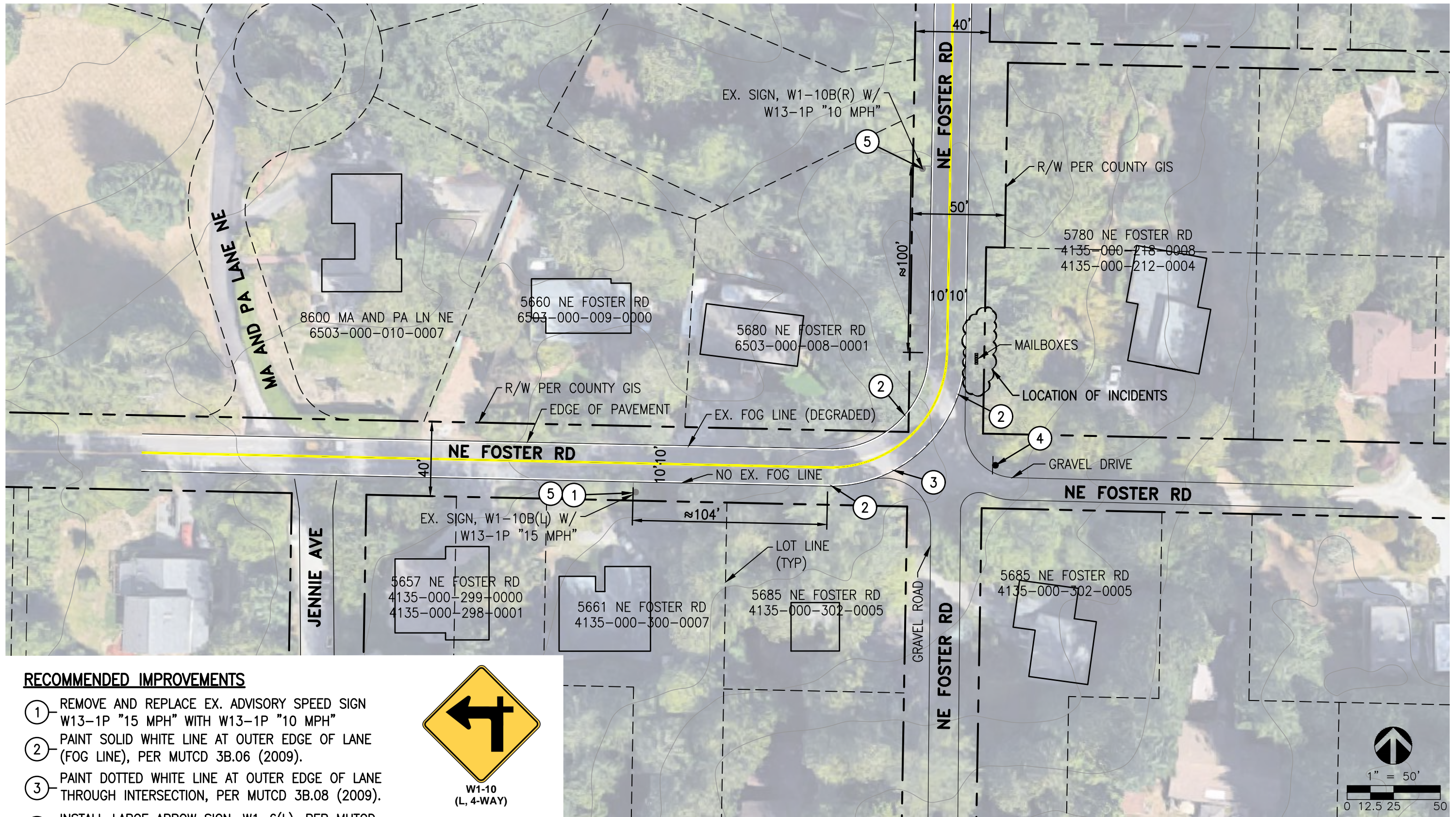




W13-1P  
"10 MPH"

**EB - NE FOSTER RD TRAFFIC SAFETY**  
**ALTERNATIVE 2**





**RECOMMENDED IMPROVEMENTS**

- ① REMOVE AND REPLACE EX. ADVISORY SPEED SIGN W13-1P "15 MPH" WITH W13-1P "10 MPH"
- ② PAINT SOLID WHITE LINE AT OUTER EDGE OF LANE (FOG LINE), PER MUTCD 3B.06 (2009).
- ③ PAINT DOTTED WHITE LINE AT OUTER EDGE OF LANE THROUGH INTERSECTION, PER MUTCD 3B.08 (2009).
- ④ INSTALL LARGE ARROW SIGN, W1-6(L), PER MUTCD 2C-12 (2009)
- ⑤ REPLACE EX. COMBINATION HORIZONTAL ALIGNMENT/ INTERSECTION SIGN WITH MODIFIED W1-10 (L/R, TURN, 4-WAY INTERSECTION), PER MUTCD 2C.11 (2009)



W1-10  
(L, 4-WAY)



W13-1P  
"10 MPH"



W1-6 (L)

**EB - NE FOSTER RD TRAFFIC SAFETY  
ALTERNATIVE 3**

